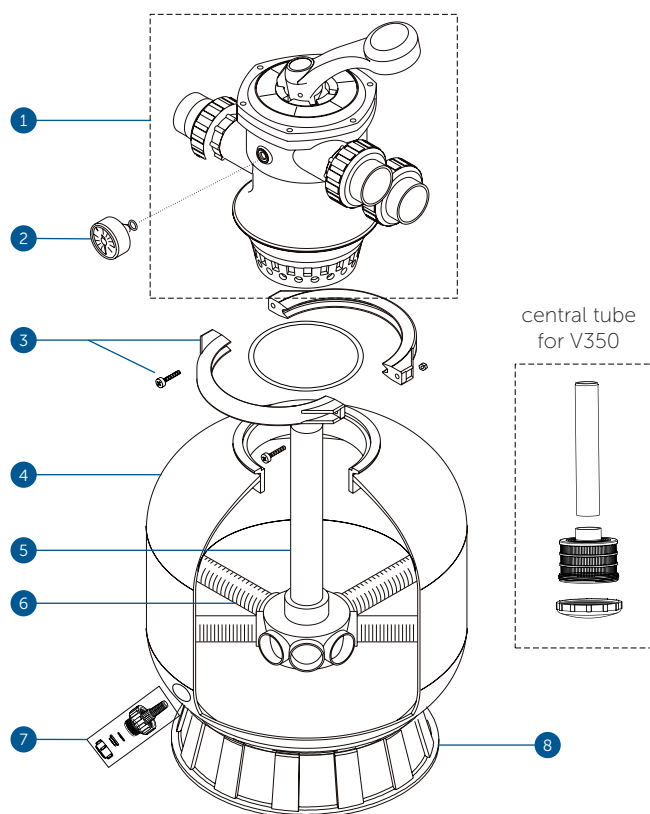


5.

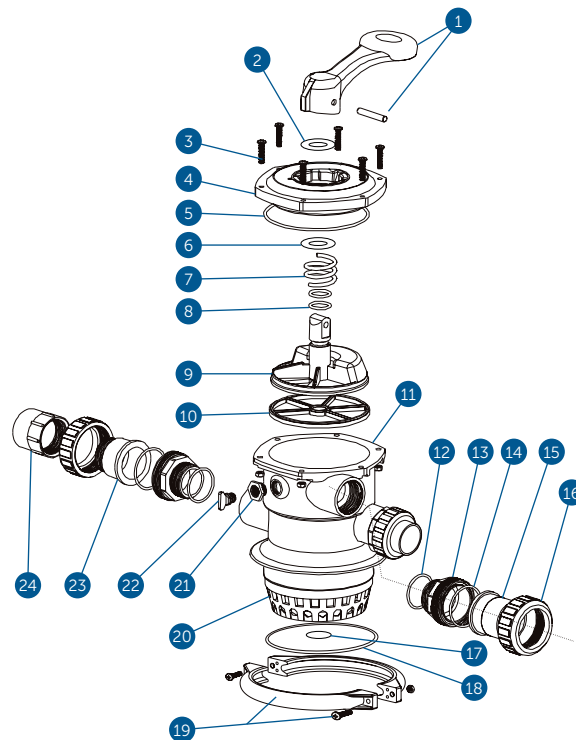
List of filter components



Item	Product Description	Product code
1	six-way valve	1ND02-01-069
2	pressure gauge with O-ring	1ND02-01-019
3	flange clamp and screw with nut	1ND02-01-037
4	filtration container to P450 and FSP450	1ND02-01-022
	filtration container to P500 and FSP500	1ND02-01-023
5	central tube - P350	1ND02-01-047
	central tube - P400	1ND02-01-048
	central tube - P450	1ND02-01-049
	central tube - P500	1ND02-01-050
	central tube - P650	1ND02-01-051
6	water drainage tube - P400-P450	1ND02-01-052
	water drainage tube - P500-P700	1ND02-01-067
7	drainage valve	1ND02-01-056
8	stand under container - P350	1ND02-01-029
	stand under container - P400-P450	1ND02-01-030
	stand under container - P500-P750	1ND02-01-031

List of six-way valve components

6.



Item	Product Description	Product code
1	lever, lever pin	1ND02-01-025
2	washer	1ND02-01-026
3	screw with nut, cover	1ND01-01-023
4	set cover	1ND02-01-017
5	O-ring cover	1ND02-01-043
6	washer	1ND02-01-027
7	spring	1ND02-01-032
8	revolving wheel O-ring	1ND02-01-041
9	revolving wheel	1ND02-01-035
10	Spider - inner six-way valve seal (individual functions)	1ND02-01-040
11	body-diffuser	1ND02-01-066
12	threaded coupler O-ring	1ND02-01-038
13	threaded coupler pipe fitting	1ND02-01-038
14	threaded coupler O-ring	1ND02-01-038
15	threaded coupler adaptor	1ND02-01-038
16	threaded coupler cap nut	1ND02-01-038
17	O-ring central tube	1ND02-01-045
18	O-ring filter	1ND02-01-044
19	screw with nut, flange clamp	1ND02-01-037
20	6-way valve diffuser - Brilix	1ND02-01-012
21	nut, stopper (threaded part designed for mounting pressure gauge)	1ND02-01-034
22	stopper with O-ring (use in case of pressure gauge failure)	1ND02-01-060
23	waste aperture	1ND02-01-058
24	connector	1ND02-01-046