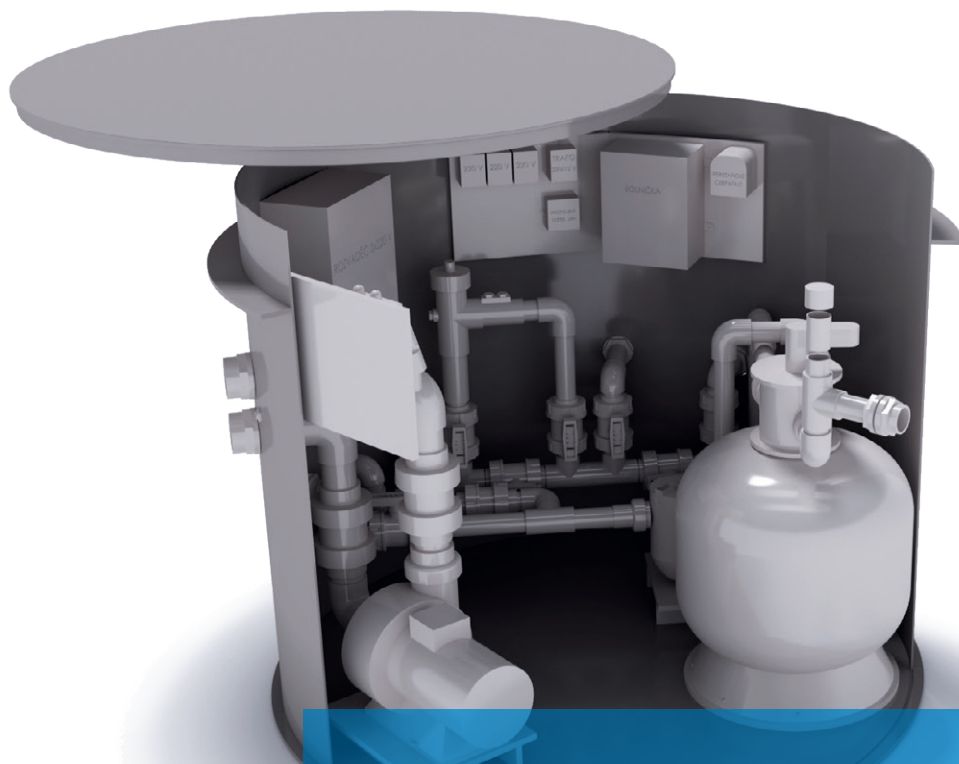


# Building preparations



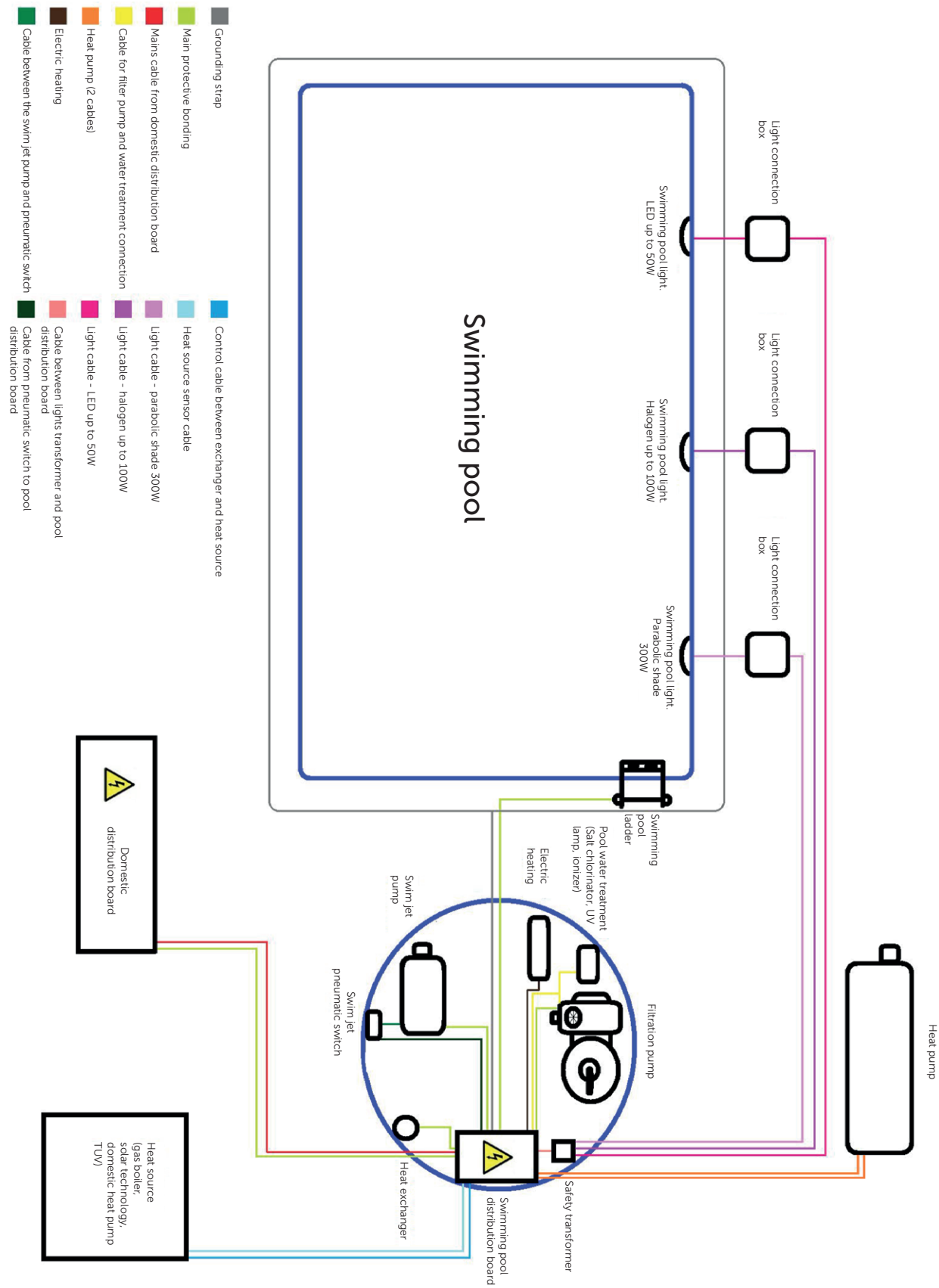
## Electrical wiring

Verze: 24. 1. 2018 / Revize: 24. 1. 2018  
L. V.



[www.ALBIXON.com](http://www.ALBIXON.com)

# Schema



Power cord from the main distribution board for technology which does not includes the heat pump XHP200, XHPFD 200, other electric heating stronger than 12kW and swim jet unit.

- Mains cable CYKY 3 J x 4 + CY 6 GY (main protection bonding, hereinafter MPB) including RCD with a residual current of 30 mA
- Mains cable circuit breaker 20A/3/B
- Main domestic circuit breaker 25A/3/B

Power cord from the main distribution board for technology which does not includes the heat pump XHP200, XHPD 200, other electric heating stronger than 12kW and includes swim jet unit.

- Mains cable CYKY 5 J x 4 + CY 6 GY (main protection bonding, hereinafter MPB) including RCD with a residual current of 30 mA
- Mains cable circuit breaker 20A/3/B
- Main domestic circuit breaker 25A/3/B

Power cord from the main distribution board for technology which includes the heat pump XHP200, XHPFD 200, other electric heating stronger than 12kW. The swim jet unit might be also included.

- Mains cable CYKY 5 J x 6 + CY 6 GY (MPB) including RCD with a residual current of 30 mA
- Mains cable circuit breaker 25A/3/B
- Main domestic circuit breaker 32A/3/B

**CAUTION! THIS INSTALLATION IS NOT RECOMMENDED FOR MAIN DOMESTIC CIRCUIT BREAKER 25A/3/B OR LOWER !**

**THE MAXIMUM DISTANCE BETWEEN THE HOUSE AND THE DISTRIBUTION BOX IS 20 METERS FOR THE MENTIONED CABLE THICKNESS. IN CASE THE DISTANCE BETWEEN THE POOL AND THE MAIN DISTRIBUTION BOX IS LONGER, THE CAABLE MUST BE STRONGER.**

## Swim jet pump cables

- Cable from the jet swim pump to the pneumatic switch NYM 5 J x 1.5
- Cable for MPB swim jet pump CYA 6 GY
- Cable from the pneumatic switch swim jet to the pool distribution board CYM J 5 x 2.5
- Circuit breaker for the pool distribution board 10A/3/C

## Cables for filter pump without pool water treatment (chlorinator, Uv lamp, ionizer)

- Cable from the filter pump to the pool distribution board CYKY 3 J x 1.5
- The circuit breaker for the pool distribution board 4A/1/C

# Electrical wiring

## Cables for filter pump with pool water treatment (chlorinator, Uv lamp, ionizer)

- Cable from the filter pump and pool water treatment to the pool distribution board CYKY 3 J x 1.5
- The circuit breaker for the pool distribution board 6A/1/C

## Cables for pool lights

- Cable between light up to 50W and transformer for light CYKY 3 J x 2.5
- Cable between light up to 100W and transformer light CYKY 3 J x 4
- Cable between light 300W and transformer for light CYKY 3 J x 6
- Circuit breaker in the pool distribution board for the lights transformer is determined according to the final sum of the values (W) light

## Cables for heat pump XHP/XHPFD 40-140.

- Cable between heat pump and pool distribution board CYKY 3 J x 2.5
- Circuit breaker in the pool distribution board 20A/1/C

## Cables for heat pump XHP/XHPFD 200

- Cable between heat pump and pool distribution board CYKY 3 J x 4
- Circuit breaker in the pool distribution board 20A/1/C

## Cables for heat exchanger

The cable to the temperature sensor between the pool distribution board and the heat source is given by the manufacturer. The control cable to the heat source is CYKY 5 J x 1.5  
The exchanger must be connected to the main protection bonding (MPB)

## Cables for electric heating

- Cable for 3kW heating CYSY 5 J x 2.5 and circuit breaker in the pool distribution board 6A/3/B
- Cable for 6kW heating CYSY 5 J x 2.5 and circuit breaker in the pool distribution board
- Cable for 9kW heating CYSY 5 J x 2.5 and circuit breaker in the pool distribution board 16A/3/B
- Cable for 12kW heating CYSY 5 J x 4 and circuit breaker in the pool distribution board 20A/3/B
- Cable for 15kW heating CYSY 5 J x 4 and circuit breaker in the pool distribution board 25A/3/B
- Cable for 18kW heating CYSY 5 J x 6 a and circuit breaker in the pool distribution board 32A/3/B

## Stainless steel ladder and other metal components

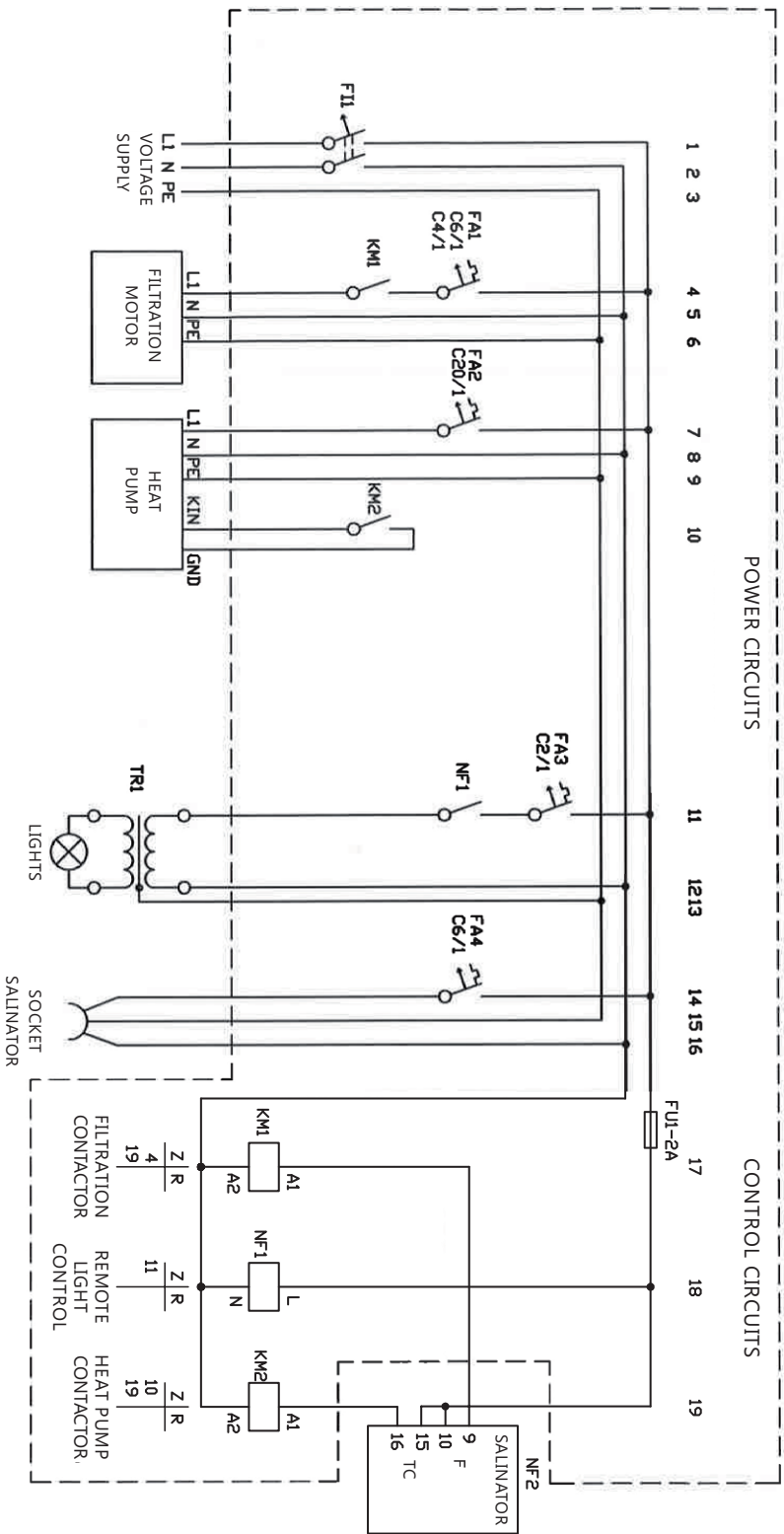
Stainless steel ladder and other metal components in the swimming pool technology must be connected to MPB CYA 6 OR CY 6 GY, but always according to the relevant instruction manual.

## Metal swimming pool ladder

When installing the metal ladder a connection must be carried out to MPB CYA OR CY 6 GY

## SAFETY RECOMMENDATION

We recommend to protect the pool power circuit supply by a tripping coil with a probe that disconnects the power circuit when the technological box is flooded (max. 10 cm).

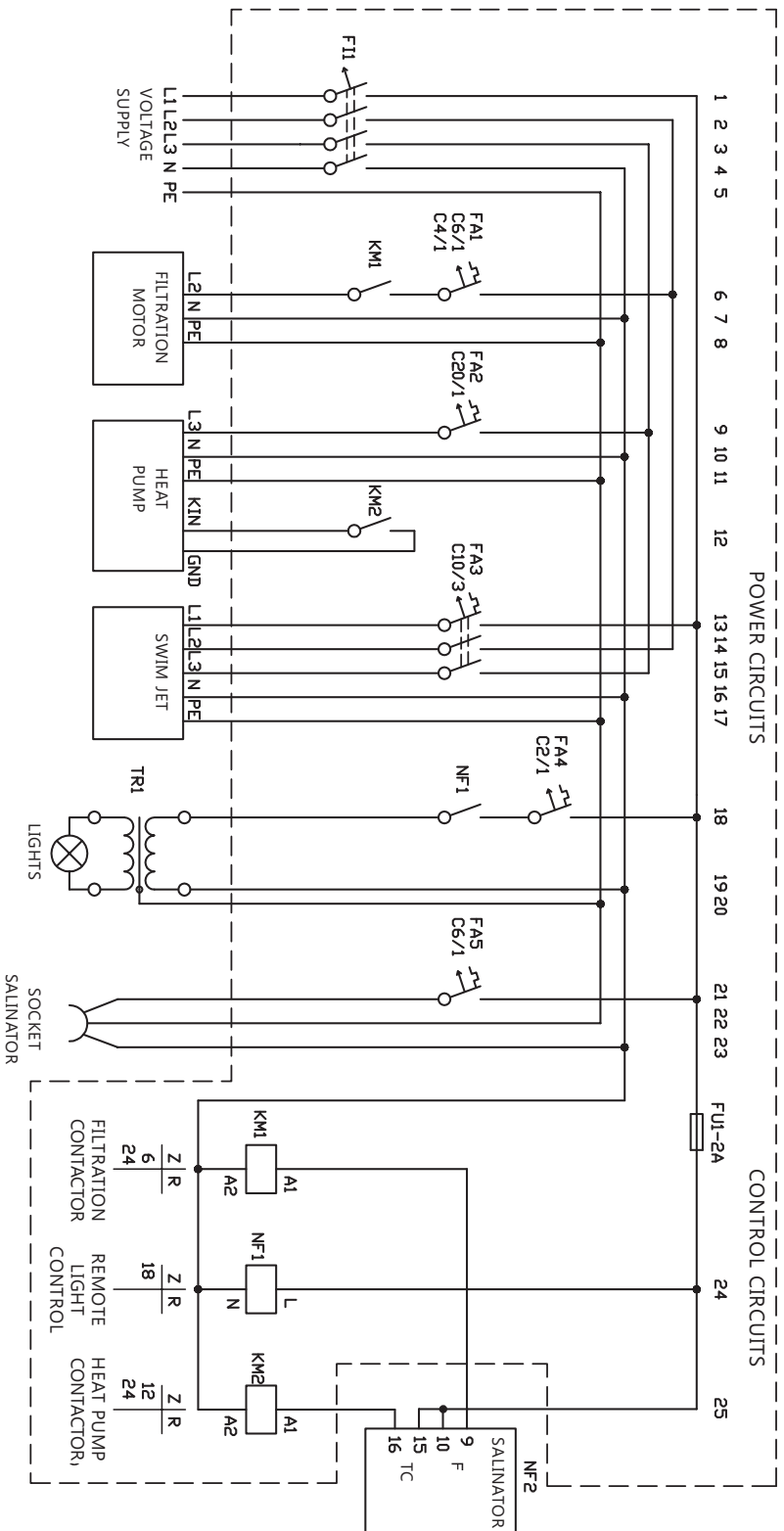


- Legend
- FI1 - current circuit breaker 25/2/0,03
  - FA1 - filtration circuit breaker by power C6/1, C4/1
  - KM1 - filtration contactor
  - FA2 - heat pump circuit breaker C20/1
  - KM2 - heat pump contactor
  - FA3 - lights transformer circuit breaker C2/1
  - FA4 - circuit breaker - salinator C6/1
  - TR1 - safety transformer 230V/12V
  - FU1 - fuse links 2A
  - NF1 - remote light control
  - NF2 - control unit - salinator

Device with program salinator

Drawn by: Jiri Ungř	Date: 22.9.2016	Name: Distribution board AO-1	
Verified by: Jindřich Sobotka	Date: 25.9.2016		
Approved by: Daniel Rychvalský	Date: 26.9.2016	Type: F/SD/TC/NaCl	
ALBIXON a. s.		Number of pages: 1	Page number: 1

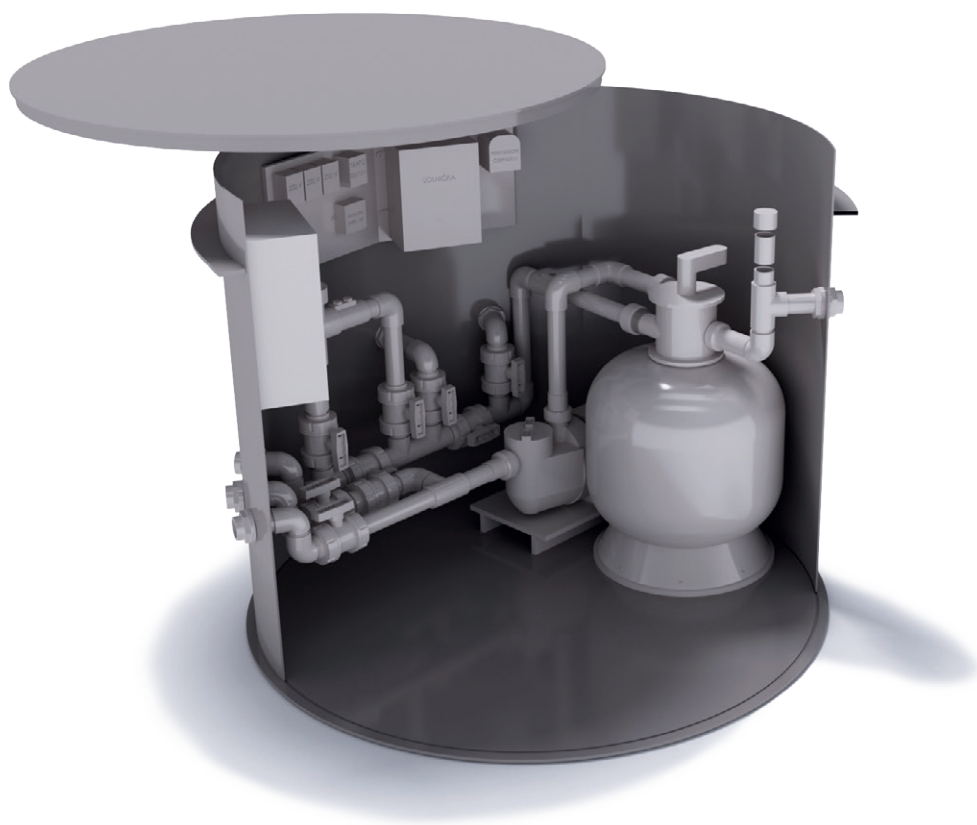
# Schema



## Device with program salinator

Drawn by: Jiri Ungr	Date: 20.9.2016	Name: Distribution board AO-2	
Verified by: Jindrich Sobotka	Date: 22.9.2016		
Approved by: Daniel Rychvalsky	Date: 23.9.2016	Type: F/SD/TC/P/NaCl	
ALBIXON a. s.		Number of pages: 1	Page number: 1

## Notes



Thank you  
for using  
ALBIXON PRODUCTS



**ALBIXON**  
[export@albixon.com](mailto:export@albixon.com)  
[www.ALBIXON.com](http://www.ALBIXON.com)

Note that the photos used in the manual are illustrative only. Printing and typesetting errors reserved.